



# MONTHLY MEMBERSHIP PROGRESS REPORT

District 411 A

Results as of: 11/30/2017

GMT: KAMAL JOSHI

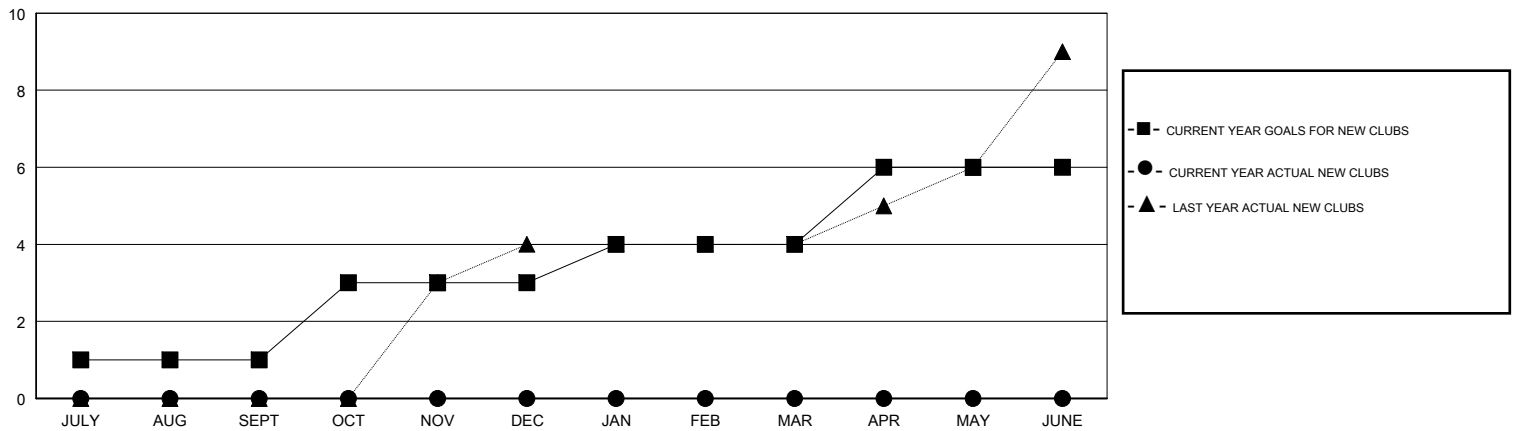
LOCATION KENYA AFRICA

GMT CA

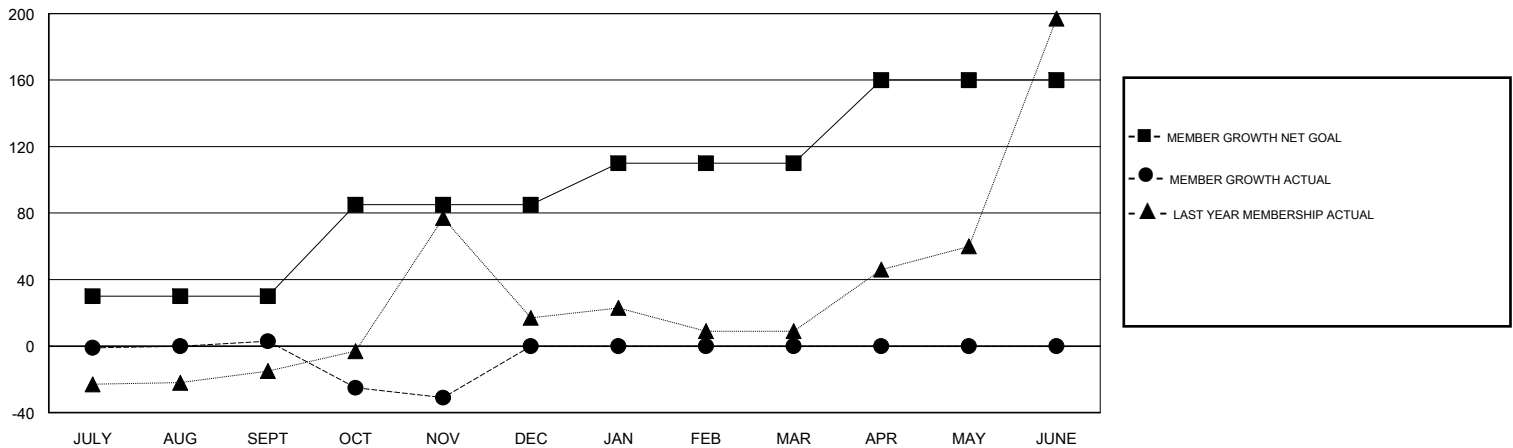
Clubs			
RESULTS FOR 2017-2018			
QUARTER	NEW CLUB GOAL	NEW CLUBS	DROPPED CLUBS
JULY/AUG/SEPT	1	0	0
OCT/NOV/DEC	2	0	0
JAN/FEB/MAR	1	0	0
APR/MAY/JUNE	2	0	0

Members			
RESULTS FOR 2017-2018			
QUARTER	MEMBER GROWTH NET GOAL	MEMBER GROWTH ACTUAL	DROPPED MEMBERS ACTUAL (including transfers)
JULY/AUG/SEPT	30	15	11
OCT/NOV/DEC	55	23	57
JAN/FEB/MAR	25	0	0
APR/MAY/JUNE	50	0	0

GOALS AND ACTUAL NEW CLUBS CUMULATIVE



GOALS AND ACTUAL MEMBERS CUMULATIVE



DROPPED CLUBS: 0
------------------

18 CLUBS OF 76 ADDED 1 OR MORE NEW MEMBERS

GENDER DISTRIBUTION	
MALE	1,141 (63.25%)
FEMALE	663 (36.75%)
Women Percentage Fiscal Year Goal: 40%	

DROPPED MEMBERS	
DECEASED	4
CLUB CANCELLED	0
OTHER	64
<b>TOTAL</b>	<b>68</b>

[CLICK HERE FOR CUMULATIVE MEMBERSHIP DATA](#)

TOTAL FAMILY UNIT MEMBERS	319
FAMILY MEMBERS PAYING HALF DUES	175